

AFM4522 ALL-FLEX MOWER

HP REQUIRED
65-100 HP

HITCH
Pull-Type

MOWERS

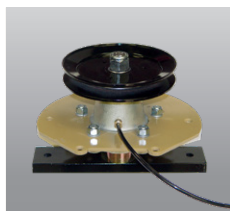


	AFM4522
Horsepower	65-100 HP
Hitch	Pull-Type, Adjustable Clevis & Safety Tow Chain
Working Width (cm)	21' 9" (663)
Overall Width	22'
Transport Width	9' 6"
Positive Tongue Wt - lb	740
Weight - lb (kg)	4,150 (1,886)
Cutting Height	3/4" - 5-1/4" in 1/4" incr.
Wing Cylinders	3-1/2" x 12"
Rear Deck Cylinder	2-1/2" x 8"
Gearbox	540 RPM, 3 Wing, 1 Splitter
Decks: 3 each	90"
Deck Thickness	3/16"
Deck Overlap	4-1/2"
Blade Hub	5 Bolt Casting
Blade Size	5/16" x 2-1/2" x 31-17/32"
Blade Overlap	2-1/4"
Blade Tip Speed	18,498 fpm
Blade Bearings	Greaseable Ball Bearings
Blade Spindles	1-5/8" Stressproof® Shaft
Blade Spindle RPM	2,241 RPM
Blade Drive Belt	1 C-section
Discharge	Rear
Deck Tires - 10 total	18 x 9.5 Air Tire, Sealant
Deck Wheel Spindles	1-1/4" w/Nylon Bushings
Transport Tires and Bearing	P27560SR, Tapered Bearings
Anti-Scalp Roller	Front Center of Each Deck
Input Driveline	Cat. 4 CV w/Slip-Clutch
Deck Driveline	Cat. 3
Mowing capacity @2mph	5.27 Acres/hr
@4mph	10.54 Acres/hr
@6mph	15.82 Acres/hr
Flex - Wings	23 Degrees L-R, 22 Degrees F-B
Flex - Center	10 Degrees L-R, 22 Degrees F-B
Transport Lights	Standard
Colors	

Wide open spaces.

Land Pride's AFM4522 All Flex Mower is a commercial mower that can easily mow over 10 acres per hour. Contractors can make quick work of turf areas like parks, sports complexes, and sod farms. The high blade tip speed will produce a quality cut in bermuda, fescue, or rye turf grasses. The narrow transport width allows access to area with ease, easily fitting through any 10' gate.

- Anti-scalp rollers on each deck reduces turf damage
- 18" Deck tires with sealant mean fewer pounds per square inch
- Single C-section belt with spring-loaded belt tensioner on each deck
- Single beam tongue for tight turning radius
- Rear discharge decks for even dispersal
- Adjustable clevis hitch to fit various draw bar heights



The commercial duty 1-5/8" blade spindle features a cast iron housing, additional steel plate support, a 3/4" thick blade support bar and a remote greasing line.



2 YEAR
LIMITED GEARBOX
WARRANTY

Transport width of 9'6" allows for safe transport from site to site.

