

AG15 SERIES ARENA GRADERS

HP REQUIRED
18-65 HP

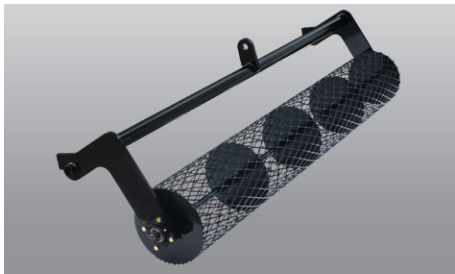
HITCH
Cat. 1



DIRTWORKING

Simple, efficient.

Land Pride's new AG15 Series Arena Grader is an entry level arena grader for hobbyists and enthusiasts. The Cat 1 hitch is quick hitch compatible and ties into a 2" x 2" square tube frame. The end tubes are 2" x 3". The S-tines feature replaceable tips. Behind the two rows of S-tines is a five-position leveling bar to smooth the soil. The job is finished with either a pipe or mesh roller to break clods and fluff the soil. The working depth is 4" and is set by a simple ratchet handle, a Land Pride exclusive feature.



Finish your job with either a pipe roller which will provide uniform surface, while the mesh roller provides uniformity as well as a smoother finish.

Working depth is 4" and is set by a simple ratchet handle, a Land Pride exclusive.



	AG1560	AG1572	AG1584
Horsepower	18-45 HP	18-55 HP	18-65 HP
Hitch	Cat. 1, Quick Hitch Compatible		
Working Width	60"	72"	84"
Working Depth	4"		
Depth Control	Ratchet Jack		
Frame	2x2 Square Tubing Frame		
S-Tines	Replaceable Tips		
Rolling Basket	Adjustable, Mesh or Pipe		
Leveling Bar	Adjustable		
Color	