

SB25 SERIES SNOW BLOWERS

HP REQUIRED
43-105 HP

HITCH
Cat. 1 & 2

SNOW TOOLS



Snow Job.

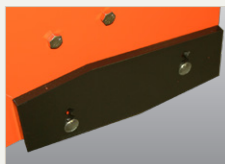
Designed for tractors ranging from 43 to 105 HP with Cat. 1 or Cat. 2 hitches, the SB2584 Snow Blowers are designed to remove snow from parking lots, walking paths, homeowner lanes, and driveways. The 84" width, 16" auger, and 24" impeller make short work of the largest snow removal tasks.



Optional Hydraulic Rotator

	SB2584
Horsepower	43-105 HP
Telescoping Hitch	Cat. 1 & 2
Working Width (cm)	84" (213)
Weight - lb (kg)	875 (397)
Main Housing Material	12 Gauge
Side Plate Material	3/16"
Optional Cutting Edge	Bolt-on, Reversible & Replaceable Hardened Steel
Optional Skid Shoes (Choice of)	Outer: Bolt-on, Adjustable & Replaceable Wear Plate: Bolt-on, Hardened, Replaceable & Reversible Button Style: Adjustable & Replaceable
Impeller	24" Diameter, 4 Blades
Impeller Housing Depth	10"
Auger	1 - 16" Diameter, 3/8" x 2-1/2" Flighting
Auger Paddles	4
Drive Chain	#60 Heavy
Chute Opening at Base	12"
Chute Rotation	Sprocket Type; Manual, Electric or Hydraulic
Chute Deflector Operation	Manual, Electric or Hydraulic
Driveshaft Shear Bolt	Grade 5 - 1/4 x 20
PTO Driveline	Cat. 3 Heavy, Shear Bolt
Colors	

Optional front cutting edge & inner or outer depth shoes can be purchased with all models to increase life of the units and to prevent gouging on uneven surfaces.



Side Wear Plate



Button-style



Outer Skid Shoe

Chute Rotation available in Manual, Hydraulic, or Electric. The chute rotates so you can direct the snow right where you want it.



Manual Chute Rotator



Optional Electric Rotator



Tilt can be easily adjusted manually, or with electric or hydraulic option.